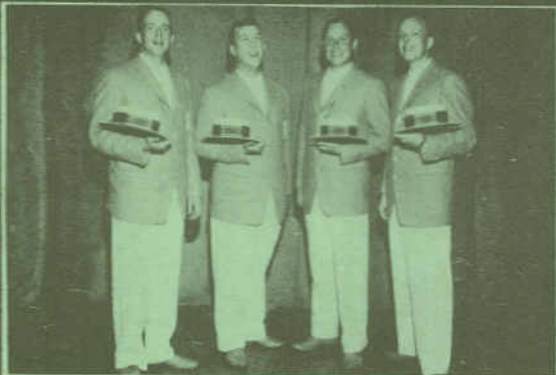


MICHIGAN SINGS



THE SHARPKEEPERS

Bob Craig Bill Rowell Gordon Limberg Al Rehkop

troubadour



NOVEMBER 1962

TAG

DEAR OLD GAL,
WHO'S YOUR
PAL TONIGHT?

As arranged by Renee Craig and sung by
The Sharpkeepers

DEAR OLD GAL, WHO'S YOUR PAL TONIGHT?

The image shows a musical score for the song "Dear Old Gal, Who's Your Pal Tonight?". It consists of two systems of music, each with a vocal line and a piano accompaniment line. The first system covers the first eight measures of the song, and the second system covers the next four measures. The key signature is one flat (B-flat), and the time signature is 3/4. The lyrics are written below the vocal line.

System 1:

Vocal line: DEAR OLD GAL WHO'S YOUR PAL TO NIGHT (TO NIGHT) DEAR OLD
Piano line: Accompaniment for the first system.

System 2:

Vocal line: GAL WHO'S YOUR PAL TO NIGHT ?
Piano line: Accompaniment for the second system.